

12-2001

## Percy Hughes

Philip A. Metzger  
*Lehigh University*

Follow this and additional works at: <http://preserve.lehigh.edu/special-collections-publications-flyer>

---

### Recommended Citation

Metzger, Philip A., "Percy Hughes" (2001). *Flyer: A Special Collections Newsletter*. 19.  
<http://preserve.lehigh.edu/special-collections-publications-flyer/19>

This Article is brought to you for free and open access by the Special Collections Publications at Lehigh Preserve. It has been accepted for inclusion in Flyer: A Special Collections Newsletter by an authorized administrator of Lehigh Preserve. For more information, please contact [preserve@lehigh.edu](mailto:preserve@lehigh.edu).

No. 19 • December 2001

Lehigh University  
Information Resources

# Special Collections *Flyer*

## Percy Hughes

Percy Hughes is not a name that resonates with the Lehigh University of today, and yet what he accomplished in his 35 years (1907-1942) as a member of the Lehigh faculty is manifest in the existence of the College of Education and in other aspects of the structure and content of the University.

I want to use this Special Collections *Flyer* to communicate something about Hughes and his accomplishments, with the assistance of his daughter Elizabeth Clark, professor emerita of sociology at Arcadia (née Beaver) College, who has been visiting Special Collections once a week for more than a semester researching the activities of her father and his influence on Lehigh.

Prof. Clark has kindly provided this capsule biography of her father:

*Born in Peshawar, British India, in 1872 of Anglican missionary parents, Hughes was taken to England at the age of three. He and his siblings and mother stayed there while his father returned to Peshawar until the older children were in public schools and his mother could join Reverend Hughes again with the younger children. Hughes went to Christ's Hospital School, known as the Blue Coat*

Published occasionally by Special Collections, Lehigh University Information Resources, Linderman Library, 30 Library Drive, Bethlehem, Pa. 18015-3067. To be placed on our mailing list, please write to the above address or send e-mail to [inspc@lehigh.edu](mailto:inspc@lehigh.edu). Copies are also available, in pdf file format, at World Wide Web site <http://www.lib.lehigh.edu/spec.coll/spec.coll.html>. Your comments and suggestions are always appreciated.

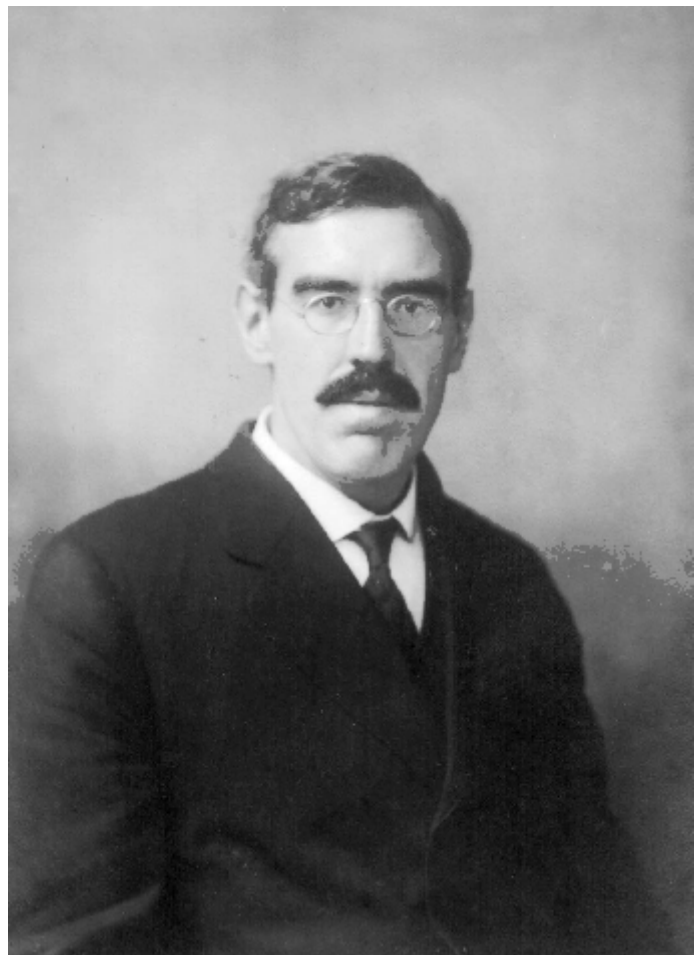
*School and in 1888 with his family came to New York City where his father became an Episcopal clergyman.*

*His sister, threatened with tuberculosis, was sent to Alfred University for her health. Hughes left Columbia University to complete his senior year at Alfred and to accompany her there. Within six weeks of matriculation, Hughes was asked by the president of Alfred, the professor of philosophy, to teach the course. Hughes then took an MA and Ph.D. at Columbia University, where he was a student and protégé of John Dewey, and taught there for a few years.*

*In 1907, Henry S. Drinker, who had been president for a mere two years, brought Hughes to Lehigh as assistant professor education, philosophy, and psychology. In 1909 he was promoted to full professor. Over the years from 1909, Hughes periodically chaired the work in education – both extension and summer session courses – and taught psychology and philosophy, ending as Chairman of the Department of Philosophy, Psychology and Education and later the Clara H. Stewardson Professor of Philosophy.*

*Hughes died in 1952.*

In order to gain an understanding of Hughes and his role in the development of Lehigh as a modern university, Prof. Clark has been using a wide variety of materials in Special Collections. She comments on some





*Ilhan Citak, Special Collections Assistant. Reading room hours are Monday through Friday, 1 p.m. to 5 p.m. or by appointment. Telephone: (610) 758-4506; fax (610) 758-6091; e-mail: [inspc@lehigh.edu](mailto:inspc@lehigh.edu).*